



SymGEO

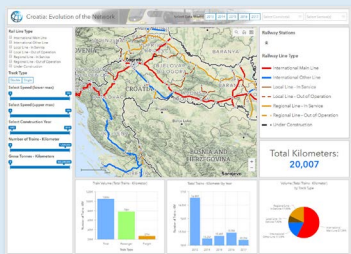
A DIVISION OF
S Y M G E O

TELL A STORY TO REMEMBER WITH YOUR DATA



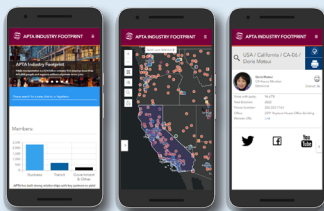
"The new Vision Zero DC website will help us work closely with community members to identify problems and build solutions. SymGEO iterated quickly and efficiently on design ideas and built a very engaging platform solution."

- District Department of Transportation (DDOT)



"This is superb and exactly what the client needed and what I was imagining."

- The World Bank Group



"We are happy with the results of our partnership with SymGEO. They produced a website that equals our ambition and stature as an association."

- American Public Transportation Association (APTA)

SymGEO provides Geographic Information System (GIS) mapping solutions and digital community engagement platforms using Esri technology.

Located near Washington, DC, we specialize in state and local government ArcGIS solutions. This includes data setup, application configuration, design, deployment, and platform maintenance. As a small, minority, woman-owned business, we deliver tremendous value to our partners. As a GSA IT Schedule 70 holder, we offer competitive rates and flexible staffing.

GIS MAPPING SOLUTIONS

- SymGEO leverages configurable, data-driven technology from Esri to inform and communicate decisions
- ArcGIS Dashboards, StoryMaps, Solutions, and Hub configurations
- Gain insight into spatial trends, outliers, and changes over time
- Mobile responsive for data collection and display on the go
- 3D data development and ArcGIS Urban configuration to visualize existing or proposed scenarios

COMMUNITY ENGAGEMENT

- SymGEO designs and implements ArcGIS Hub and StoryMaps to educate, empower, and engage communities
- Highlight key maps, data, reports, or applications
- Enlist "people as sensors" to keep data fresh and current
- Incorporate surveys and feedback for two-way engagement

www.symgeo.com

GSA: IT Schedule 70 SIN:132-51
DUNS: 018843644
CAGE Code: 1X2A7



esri

Partner Network
Silver



Schedule 70
Contract 47QTCA19D00AL



ArcGIS System Ready
Specialty



ArcGIS Marketplace
Provider

SBA WOSB
Woman Owned Small Business



Federal Small Business
Specialty



State and Local
Government
Specialty



ArcGIS Hub
Specialty



Esri Partner Conference
2023 Award Winner
Partner to Partner Collaboration

SymGEO, a division of Symago LLC
9841 Washingtonian Blvd., Ste 200-310
Gaithersburg, MD 20878

tel. 240-575-1215
engage@symgeo.com
www.symgeo.com

[@sym_geo](https://twitter.com/sym_geo)

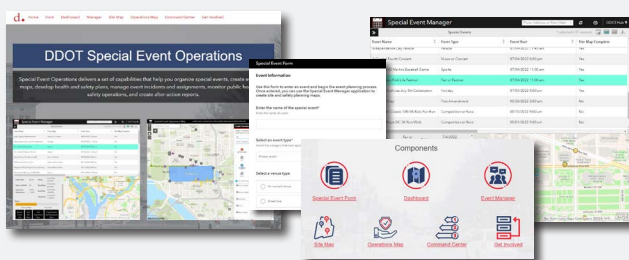
[linkedin.com/company/symgeo/](https://www.linkedin.com/company/symgeo/)

facebook.com/SymGEO.gis/



SymGEO

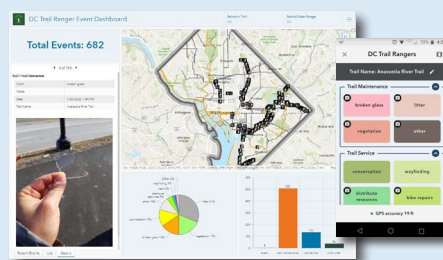
PROJECT EXAMPLES



SPECIAL EVENT OPERATIONS

"The Special Events solution has sparked a new level of excitement in preparing for special events in the city. With SymGEO's technical help, DDOT now has improved internal communication and decision-making abilities. The training provided by SymGEO has been super beneficial – they are a treasure!"

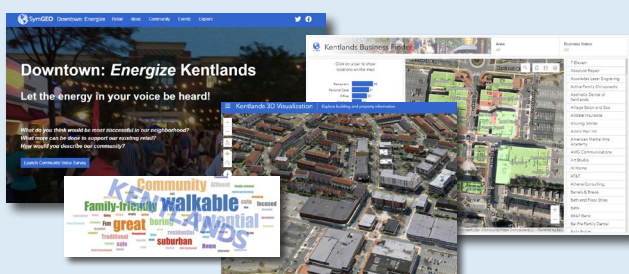
– DDOT Program Manager



DC TRAIL RANGER

"As a field team that does a wide variety of outreach and maintenance tasks, ArcGIS QuickCapture has been great for record-keeping and storytelling of program impact. I can confidently say that staff stopped to sweep up broken glass in February 97 times!"

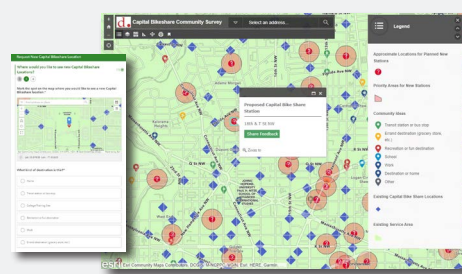
– Trail Ranger and Outreach Director,
Washington Area Bicyclist Association



DOWNTOWN: ENERGIZE KENTLANDS

"Downtown Energize! is an innovative digital tool that provides mapping of business locations to potential and existing customers in a format that is fun, easy to use, and flexible enough to accept updates and even track current events. It's a win-win for our community by empowering residents to engage with our local businesses and to energize our downtown!"

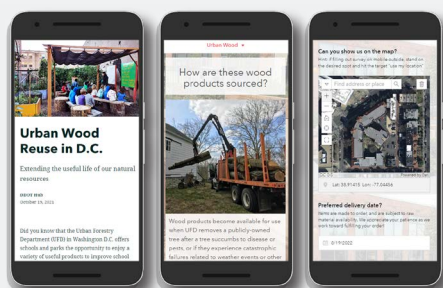
– Local Business Owner, Kentlands



CAPITAL BIKESHARE

"The SymGEO team helped us quickly implement a complex, public-facing tool with a simple user interface to help us gather a high volume of public input data, which is extremely useful for Capital Bikeshare planning purposes. Their knowledge of GIS and ESRI products helped make a challenging project with many stakeholders simple and quick to turn around."

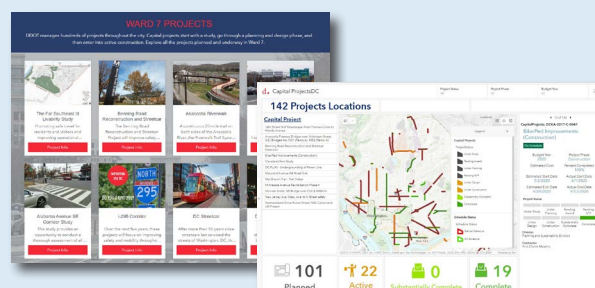
– DC Capital Bikeshare Program Manager



URBAN FORESTRY HUB

"SymGEO is a remarkably flexible and responsive company. They listen carefully to requirements and deftly blend customer vision with technological capabilities."

– DC Urban Forestry Associate Director



CAPITAL PROJECTS HUB AND DASHBOARD

"The SymGEO team has helped DDOT transform our digital presence into a highly engaging, well-organized platform. They leverage GIS best-practices and Esri technology to produce visually informative and actionable solutions."

– DDOT Chief Performance Officer