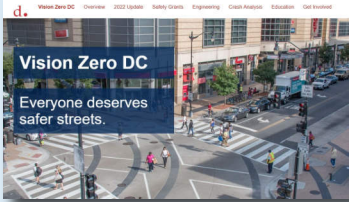




# SymGEO

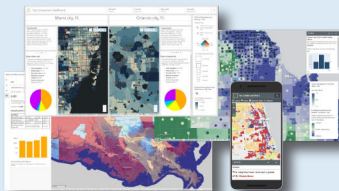
A DIVISION OF  
**S Y M G E O**

## TELL A STORY TO REMEMBER WITH YOUR DATA



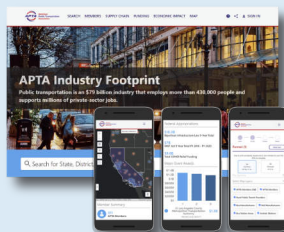
*"The new Vision Zero DC website will help us work closely with community members to identify problems and build solutions. SymGEO iterated quickly and efficiently on design ideas and built a very engaging platform solution."*

- District Department of Transportation (DDOT)



*"SymGEO has the unique ability to distill content into compelling visual geospatial products and narratives that tell a story and help track impacts."*

- Lincoln Institute of Land Policy



*"We are happy with the results of our partnership with SymGEO. They produced a website that equals our ambition and stature as an association."*

- American Public Transportation Association (APTA)

## SymGEO provides Geographic Information System (GIS) mapping solutions and digital community engagement platforms using Esri technology.

Located near Washington, DC, we specialize in state and local government ArcGIS solutions. This includes data setup, application configuration, design, deployment, and platform maintenance. As a small, minority, woman-owned business, we deliver tremendous value to our partners. As a GSA IT Schedule 70 holder, we offer competitive rates and flexible staffing.

### GIS MAPPING SOLUTIONS

- SymGEO leverages configurable, data-driven technology from Esri to inform and communicate decisions
- ArcGIS Dashboards, StoryMaps, Solutions, and Hub configurations
- Gain insight into spatial trends, outliers, and changes over time
- Mobile responsive for data collection and display on the go
- 3D data development and ArcGIS Urban configuration to visualize existing or proposed scenarios

### COMMUNITY ENGAGEMENT

- SymGEO designs and implements ArcGis Hub and StoryMaps to educate, empower, and engage communities
- Highlight key maps, data, reports, or applications
- Enlist "people as sensors:" to keep data fresh and current
- Incorporate surveys and feedback for two-way engagement

[www.symgeo.com](http://www.symgeo.com)

GSA: IT Schedule 70 SIN:132-51  
DUNS: 018843644  
CAGE Code: 1X2A7



**esri** Partner Network  
Silver



**Schedule 70**  
Contract 47QTCA19D00AL



ArcGIS System Ready  
Specialty



ArcGIS Marketplace  
Provider

**SBA WOSB**

Woman Owned Small Business



Federal Small Business  
Specialty



State and Local  
Government  
Specialty



ArcGIS Hub  
Specialty



Esri Partner Conference  
2023 Award Winner  
Partner to Partner Collaboration

**SymGEO, a division of Symago LLC**  
9841 Washingtonian Blvd., Ste 200-310  
Gaithersburg, MD 20878

tel. 240-575-1215  
engage@symgeo.com  
www.symgeo.com



@sym\_geo



linkedin.com/company/symgeo/

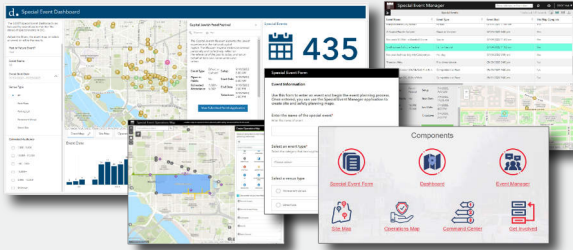


facebook.com/SymGEO.gis/



SymGEO

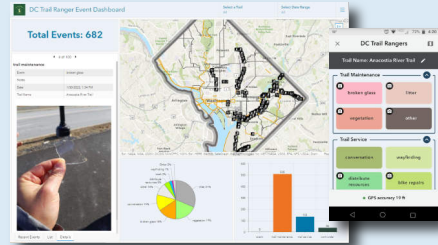
# PROJECT EXAMPLES



## SPECIAL EVENT OPERATIONS

*"The Special Events solution has sparked a new level of excitement in preparing for special events in the city. With SymGEO's technical help, DDOT now has improved internal communication and decision-making abilities. The training provided by SymGEO has been super beneficial – they are a treasure!"*

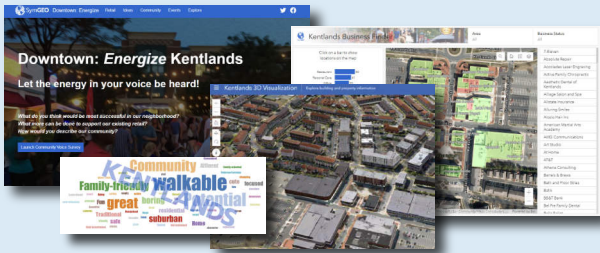
– DDOT Program Manager



## DC TRAIL RANGER

*"As a field team that does a wide variety of outreach and maintenance tasks, ArcGIS QuickCapture has been great for record-keeping and storytelling of program impact. I can confidently say that staff stopped to sweep up broken glass in February 97 times!"*

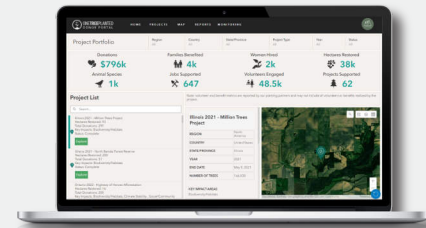
– Trail Ranger and Outreach Director, Washington Area Bicyclist Association



## DOWNTOWN: ENERGIZE KENTLANDS

*"Downtown Energize! is an innovative digital tool that provides mapping of business locations to potential and existing customers in a format that is fun, easy to use, and flexible enough to accept updates and even track current events. It's a win-win for our community by empowering residents to engage with our local businesses and to energize our downtown!"*

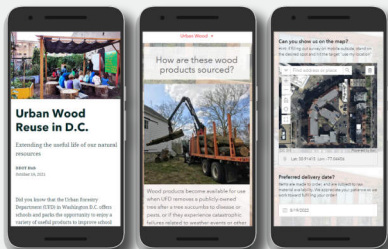
– Local Business Owner, Kentlands



## DONOR IMPACT PORTALS AND PROJECT TRACKING

*"The impact of the prototype on our donors was nothing short of astounding. Collaborating with SymGEO to craft a functional prototype during the feedback-gathering phase proved instrumental!"*

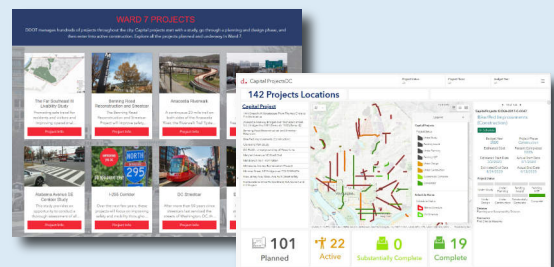
– Geospatial Systems Manager, One Tree Planted



## URBAN FORESTRY HUB

*"SymGEO is a remarkably flexible and responsive company. They listen carefully to requirements and deftly blend customer vision with technological capabilities."*

– DC Urban Forestry Associate Director



## CAPITAL PROJECTS HUB AND DASHBOARD

*"The SymGEO team has helped DDOT transform our digital presence into a highly engaging, well-organized platform. They leverage GIS best-practices and Esri technology to produce visually informative and actionable solutions."*

– DDOT Chief Performance Officer